

TRAINING & REFRESHER ON 2025 NYSDEC MS4 GENERAL PERMIT G.P.-0-24-001

6 NOVEMBER 2025

DAVID FRITTS, CPESC, CESSWI
 JEREMY VALENTINE
 KELLY MORRIS, AICP



1

ACRONYM DEFINITIONS

- SWPPP – Stormwater Pollution Prevention Plan
- SPDES – State Pollutant Discharge Elimination System
- EDC – Effective Date of Coverage
- MCM – Minimum Control Measure
- MS4 – Municipal Separate Storm Sewer System
- ECL – Environmental Conservation Law
- EDP – Effective Date of Permit
- POC – Pollutant of Concern
- TMDL – Total Maximum Daily Load Watershed
- NOI – Notice of Intent
- NOT – Notice of Termination
- BMP – Best Management Practice
- SMP – Stormwater Management Practice

2

Municipal Separate Storm Sewer Systems (MS4)

DEFINITION

- Municipal Separate Storm Sewer Systems (MS4)
 - Conveyance system that is
 - Owned by state, city, town, etc. that discharges to US waters
 - Designed or utilized to collect/convey stormwater
 - Generally separate stormwater from sewer system, treatment plants, etc.

OVERVIEW

- 1990 reauthorization of 1972 Clean Water Act (CWA)
 - Requires states, ALCs, CUs to obtain SPDES (State Pollutant Discharge Elimination) permits (Phase 1)
 - 1995, small cities and towns were required to do the same (Phase 2)
 - For regulating untreated stormwater discharges
 - Reduce quantity of pollutants discharges from stormwater
 - Held public parties responsible for water pollution

3

UNFUNDED MANDATES

Unfunded Mandates Reform Act of 1995 – Created to avoid imposing unfunded federal mandates on state and local governments. The law is triggered only when a mandate imposes a cost of \$100 million or more on a local government.



4

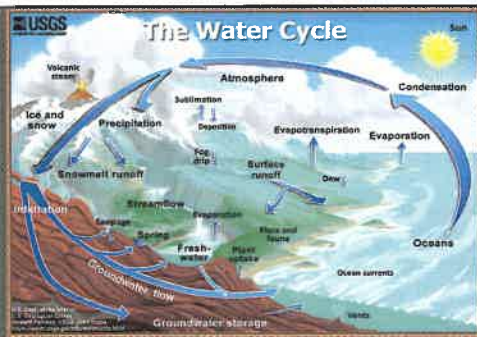
ADDITIONAL REQUIREMENTS

NON-TRADITIONAL LAND USE

ENHANCED REQUIREMENTS FOR IMPAIRED WATERS

TOTAL MAXIMUM DAILY LOAD (TMDL)

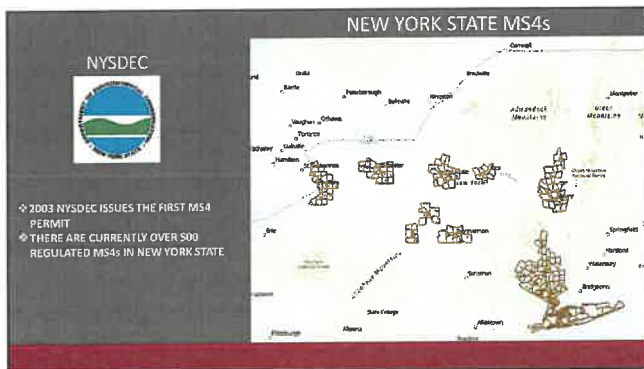
5



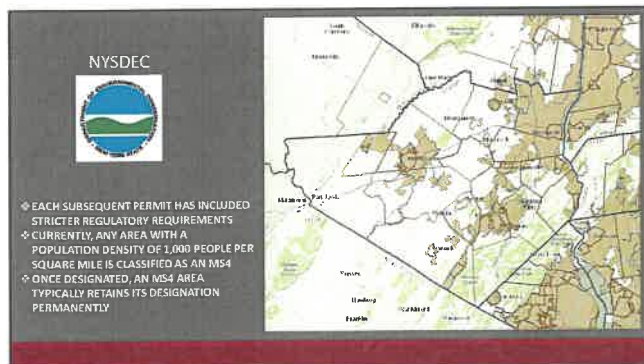
6



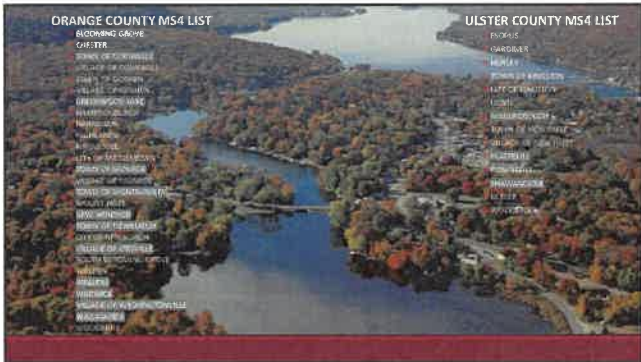
7



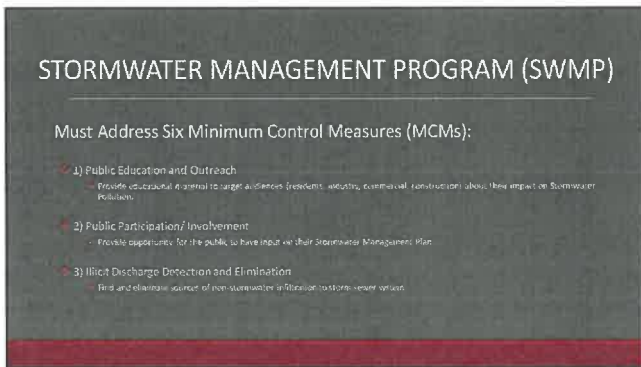
8



9



10



11



12

ANNUAL REQUIREMENTS



- Information relative to the prevention of illicit discharges made available to municipal employees, business and public.
- Review & update the SWMP as necessary.
- Update the comprehensive system mapping to include new monitoring locations, construction sites and municipal facilities.
- Submit annual and interim reports.
- Provide an opportunity for public involvement/participation and implementation of the SWMP.
- Inspect all sites with construction activity.
- Update the inventory of post-construction SMPs.
- Inspection of all municipally owned SMPs.

13

① Annual req.

NYSDEC MS4 PERMIT GP-0-24-001 2-YEAR REQUIREMENTS



- Monitoring location and inspection program**
- Illicit Discharge Track Down Program**
- Illicit Discharge Elimination Program**
- Inventory of all municipal facilities (MCM 6)
- Interim Progress Certifications for the period of January 8th - June 30th were submitted by October 1st 2025.
- Annual reports due April 1st annually.
- SWMP to be updated to include 2 year requirements by January 1, 2026.

**MCM 3 Illicit Discharge Detection and Elimination
→ Specific training required and will be offered at a later date

14

② 2 yr. plan.

NYSDEC MS4 PERMIT GP-0-24-001 3-YEAR REQUIREMENTS



- Phase I additional mapping requirements including:
 - Monitoring locations
 - Focus Areas
 - Publicly owned post-construction stormwater management practices
 - Municipal facilities

15

③ 3 yr. plan.

- mapping grant
- GIS - r/w - see mtiE.
/ Kelly

NYSDEC MS4 PERMIT GP-0-24-001 3-YEAR REQUIREMENTS

**PUBLIC EDUCATION & OUTREACH PROGRAM
MCM 1**



Designate "Focus Areas" where the Municipality will focus its education efforts to educate the public of manner pollution generating activities in these areas. Identify & designate target audiences & associated pollution generating activities. These include:

- Regulated streams
- Sewer Sheds
- TMDL watersheds
- Areas with construction activities
- Areas with on site wastewater systems
- Residential, commercial, and industrial activities
- Stormwater outfalls
- Areas with illicit discharges

Illicit discharge education, outreach topics, and how they will reduce potential for pollutants to be generated by the target audience(s).

16

NYSDEC MS4 PERMIT GP-0-24-001 3-YEAR REQUIREMENTS

**ILICIT DISCHARGE & ELIMINATION
MCM 3**



MS4 Operator must develop and maintain an inventory of monitoring locations (associated with illicit discharges).

MS4 Operator must provide monitoring locations which are located in the monitoring locations inventory.

17

NYSDEC MS4 PERMIT GP-0-24-001 3-YEAR REQUIREMENTS

**POLLUTION PREVENTION & GOOD HOUSEKEEPING
MCM 6**



Incorporate BMPs into Municipal Facility Program & Municipal Operations Program

Develop & implement a municipal facility program.

Prioritize all known municipal facilities.

Develop & implement municipal operations program

Identify when catch basin inspection is needed.

Inventory catch basin inspection information.

18

NYSDEC MS4 PERMIT GP-0-24-001 4-YEAR REQUIREMENTS



Interim Progress Certifications for the period of January 3rd – June 30th were submitted by October 1st 2023.

Annual reports due April 1st annually.

19

NYSDEC MS4 PERMIT GP-0-24-001 5-YEAR REQUIREMENTS



Phase II additional mapping requirements including MS4 infrastructure, which also includes:

- Conveyance options, closed or open drainage
- Direction of flow
- Stormwater structures (catch basins, manholes, drop inlets, etc.)
- Number of connections to and from structures
- Privately owned stormwater facilities

Records required by MS4 permit must be kept for 5 years.

(SWMP Evaluation) SWMP plan needs to be evaluated by the MS4 for compliance, effectiveness and deficiencies.

20

NYSDEC MS4 PERMIT GP-0-24-001 5-YEAR REQUIREMENTS




PUBLIC EDUCATION & OUTREACH PROGRAM
MCM 1

Once every five (5) years, the MS4 Operator must identify and document in the SWMP Plan:

- Frequency of each message.
- Review and update the focus areas, target audiences, education, and outreach topics.


21



NYSDEC MS4 PERMIT GP-0-24-001 5-YEAR REQUIREMENTS

ILLCIT DISCHARGE & ELIMINATION
MCM 3

- For existing staff, training on the MS4 Operator's illicit discharge elimination procedures must be given prior to conducting illicit discharge eliminations once every five years.



22

NYSDEC MS4 PERMIT GP-0-24-001 5-YEAR REQUIREMENTS

POST-CONSTRUCTION STORMWATER MANAGEMENT
MCM 5

Within 5 years of the EDC, specific information must be included in the inventory either by using the MS4 Operator maintenance records or by verification of maintenance records provided by the owner of the post construction SWP.

For existing staff, training on the MS4 Operator's post construction SWWP Inspection & Maintenance Procedures is required.



23

NYSDEC MS4 PERMIT GP-0-24-001 5-YEAR REQUIREMENTS

POLLUTION PREVENTION & GOOD HOUSEKEEPING
MCM 6

- Develop & implement municipal facility specific SWPPP for each high priority.
- Wet weather visual monitoring.
- Comprehensive site assessment for each high priority municipal facility.
- Sweep all roads, bridges & parking lots.
- Maintain implement the following maintenance provisions:
 - Paint mark and seal surface conditions.
 - Stage road operations and maintenance activity.
 - Reserve service/dispatch application for roadside use.
 - Contain pollutants with berms/curbs.
- Winter road maintenance requirements:
 - Regularly calibrate equipment for correct salt/liquid application rates.
 - Ensure that routine snow disposal activities comply with the Division of Water Technical User Guide Series S.1.1.1, Snow Disposal.



24

- DPW - Sabnith mtrg reports

MAPPING REQUIREMENTS

STANDARD FOR ALL WATERBODIES EXCEPT:

IMPAIRED WATERBODIES:

1. MONROVIA BROOK AND TRIBUTARIES (Westford & Weymouth)
2. ORANGE LAKE (Needham)
3. GREENWOOD LAKE (Greenwood Lake & Marsh)

TMDL WATERBODIES:

GREENWOOD LAKE AND WATERSHED

25

MAPPING REQUIREMENTS

6 month req. → 7/3/24

- VENT OUTFALLS AND ADA MS4 OUTFALLS
- INTERCONNECTIONS
- PRELIMINARY STORMWATER MODELING
- BASE MAP

• TOWNS HAVE ADDITIONAL MAPPING:

- CONVEYANCE SYSTEMS
- COLLAPSE CROSSINGS
- STORMWATER STRUCTURES

26

1 work at interns for Summer Projects m s y

MAPPING REQUIREMENTS

3 YEAR req. → 1/3/27


PUBLICLY OWNED-OPERATED POST CONSTRUCTION SMPs	IMPAIRED HAVE ADDITIONAL MAPPING:	TMDL HAS ADDITIONAL MAPPING:
<ul style="list-style-type: none"> • MUNICIPAL FACILITIES • MONITORING LOCATIONS • FOCUS AREAS 	<ul style="list-style-type: none"> • SEWERSHEDS OF MS4 AND ADA MS4 OUTFALLS • UPDATE OUTFALL INFO WITH: <ol style="list-style-type: none"> i. RETAIL AND WHOLESALE NURSERIES ii. COMMERCIAL LAWN CARE FACILITIES iii. GOLF COURSES • ADA OUTFALLS 	<ul style="list-style-type: none"> • AREAS WITH POTENTIAL TO CONTRIBUTE PHOSPHORUS TO TMDL WATERBODY: <ol style="list-style-type: none"> i. RETAIL AND WHOLESALE NURSERIES ii. COMMERCIAL LAWN CARE FACILITIES iii. GOLF COURSES iv. COMMERCIAL OR INDUSTRIAL YARD WASTE STORAGE AREAS • TYPE AND OWNERSHIP OF POST CONSTRUCTION SMPs

27


MAPPING REQUIREMENTS

5 YEAR req. → 1/3/29

- ◆ CONVEYANCE SYSTEMS
- ◆ STORMWATER STRUCTURES
- ◆ PRINTER/EXCHANGER/RAILED/POST CONSTRUCTION SURF.



28




Fluoridation broke a fire on Ohio's Cuyahoga River in 1969. The polluted river caught fire on several occasions between 1836 and 1969, when debris and oil had concentrated on the water's surface and ignited. A blaze in 1969 came at a time of increasing environmental awareness and symbolized years of environmental neglect. The Cuyahoga River fires helped spur grassroots activism that resulted in a wave of federal legislation devoted to taking various action against air and water pollution.

PAST PRACTICES THAT ARE NOW ILLEGAL

Who remembers changing the oil in your car—or helping your dad do it—and then dumping the used oil onto the ground?

The thinking was: "Oil came from the ground, so let's just put it back where it came from."



Disposing of used engine oil can be a problem. Solution: Dig a hole in the ground with a pothole digger and fill it with fine gravel. Then pour in the oil. It will be absorbed into the ground before your next change. Cover the spot with soil.

POPULAR MECHANICS JANUARY 1963

29

NYS DOH

Current guidelines on Hudson River Fish Consumption
Who Should Eat It How Often

Due to Ongoing PCB Contamination from GE's Pre-1977 Dumping



Consuming the eating risk level

- After consuming 100 grams (3.5 oz) or less of fish or shellfish per week, the risk is low.
- Consumption by the fish or shellfish is not allowed to exceed 100 grams (3.5 oz) or less.



Lower Hudson From Rip Van Winkle Bridge at Catskill to the NYC Battery		Consumption	Frequency
Bluegill	Brook Trout	0	0
Channel Catfish	Striped Bass	4	0
Common Carp	Rock Bass	0	0
Crayfish	White Perch	0	0
Emperors	Yellow Perch	0	0
Flathead Catfish	Smallmouth Bass	0	0
Golden Shiner	Spot Tail	0	0
Headwater Shiner	White Sucker	0	0
Longnose Darter	Rock Bass	0	0
Rock Bass	Striped Bass	0	0
Smallmouth Bass	White Perch	0	0
Striped Bass	White Perch	0	0
White Perch	White Perch	0	0

30

CONSTRUCTION SITE STORMWATER RUNOFF CONTROL



31

EROSION AND SEDIMENT CONTROL

INSTALLED CORRECTLY



INSTALLED INCORRECTLY



32

EROSION AND SEDIMENT CONTROL

SEDIMENT TRAP



OVERWHELMED SILT FENCE



33

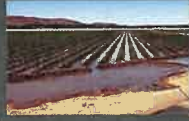
ARE THESE ILLICIT DISCHARGES?



Sediment



Cooking Oil



Irrigation Channels

34

ARE THESE ILLICIT DISCHARGES?



Car Wash Soap



Pool Water

35

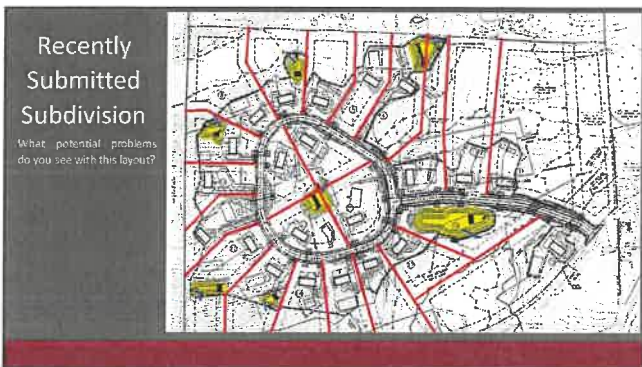


2008 - THERE ARE TWO STORMWATER BASINS

36

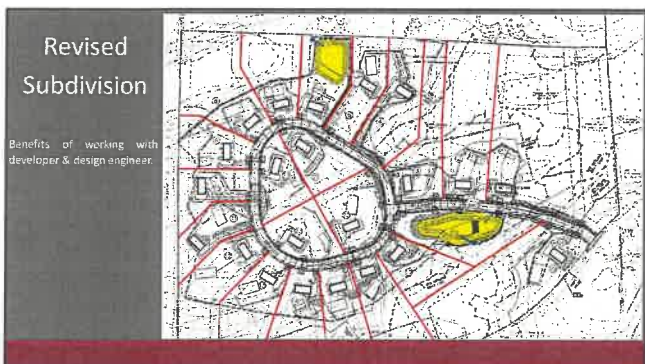


37



38

Hot Pond
mount.



39

QUESTIONS



40

THANK YOU!

Dave Fritts dfritts@mhepc.com
o: 570-296-2765
c: 845-494-0076

Jeremy Valentine jvalentine@mhepc.com
o: 570-296-2765
c: 845-264-0661

Kelly Morris kmorris@mhepc.com
c: 845-551-8574
o: 845-567-3100



41